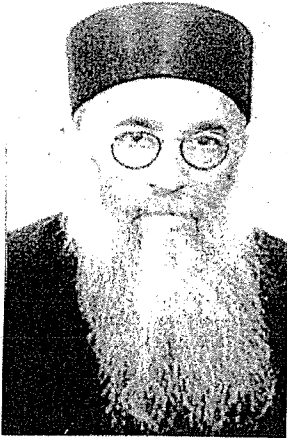


RAV YAAKOV ADES ZT"l

DAYAN AND ROSH YESHIVA OF YESHIVAT PORAT YOSEF

5658/1898 - 5723/1963
On His Yahrzeit, 27 Tammuz



Born in Aleppo, Syria in 5658/1898, Rav Yaakov Ades received his initial education from his father and, in 1910, when he was only twelve years old, his father enrolled him in Yeshivat Ohel Moed in Yerushalayim. Rav Yaakov studied there under the *rosh yeshiva*, Rav Raphael Shlomo Laniado zt"l, and then under Rav Yosef Yedid zt"l. In 1914, however, when World War I

broke out, the *yeshiva* was forced to close because so many of its students had to flee to avoid being drafted into the Turkish army. Some went to Egypt and others went to Bucharia in central Asia.

Despite the difficult conditions of those years, Rav Yaakov managed to stay in Yerushalayim. In 1918, after the war, the *yeshiva* students returned and worked to rebuild the *yeshiva* and resume their studies. In 1919, Rav Yaakov married Haya Esther, the daughter of Rav Ezra Harari-Raful zt"l, who had come to Eretz Yisrael from Aleppo in 1890 and had founded Yeshivat Ohel Moed in 1907.

Rav Yaakov's greatness was soon recognized. In the year 1920, when he was only twenty-two years old, he was appointed as a *maggid shiur* in Yeshivat Ohel Moed with Rav Raphael Shlomo Laniado zt"l. He held this position until *lyar* of 1923. When Yeshivat Ohel Moed closed that same year, the *talmidim* and staff went with their *rosh yeshiva* to Yeshivat Porat Yosef. Rav Yaakov was appointed *maggid shiur* in Porat Yosef and later became the *rosh yeshiva*. He remained there for

twenty years, shaping a generation of *talmidei chachomim*.

Rav Yaakov would come home at ten o'clock in the evening, sleep for only a few hours, and then leave at 2 a.m. to teach a class for *baalei batim* until it was time for *Shacharis* in the morning: He was so busy throughout the day that his wife never knew if he was eating enough. (This is the case with many *rabbonim*, and their wives' lot is to constantly worry about them.)

In 1935, Rav Yaakov was one of the senior *maggidei shiur* in Yeshivat Porat Yosef. He was appointed by the *Rishon Letzion*, Rav Yaakov Meir, to the *Sephardic Beis Din*, and remained in this position until 1943. In 1944, Rav Yaakov was appointed to a seat on the *Sephardic Beis Din* of Tel Aviv. At that time, he also became the *rov* of the Tel Aviv *beis haknesses* of Syrian Jews. He left his home in Yerushalayim at the beginning of each week and only returned shortly before *Shabbos*.

When Rav Yaakov heard about the passing of Rav Ephraim Menashe Hakohen zt"l, *talmid* of the *Ben Ish Chai*, he suffered intense heartache and

fainted. Rav Yaakov had learned with Rav Ephraim Menashe for numerous years. A doctor was immediately called to revive Rav Yaakov.

In 1945, he was appointed *dayan* in Yerushalayim, and ten years later he was elected to the *Beis Din Hagadol*, first as *dayan* and later as the *av beis din* together with Rav Betzael Zolty, Chief Rabbi of Yerushalayim, and Rav Yosef Shalom Elyashiv. He held this position until he passed away in 1963.

It was Rav Yaakov's practice to declare a *taanis* on himself when he needed to be careful to avoid making errors in judgment. For example, he fasted every time that he needed to arrange a *get*, and he prayed that he would not make a single mistake in his preparations. He wanted to avoid making any errors that would prevent the wife from remarrying.

Rav Yaakov passed away on 27 Tammuz 5723/1963 after four months of painful illness. His legacy continues today in the Yerushalayim *yeshiva* named after him, Yeshivat Kol Yaakov, which was founded by Rav Yehudah Ades, one of his younger sons.

INTERESTED IN SOCIAL WORK AND EARNING YOUR MSW?



An exclusive program of Long Island University and The New Seminary

We are proud to announce that Long Island University will now offer its

Master's Degree of Social Work

to students of the New Seminary starting September 2008

The Master of Social Work has become the standard for many positions in the field of social work including those in health settings and those that involve clinical work. Earning a graduate level degree will enhance the service you provide.



Accredited by the Council on Social Work Education

THE NEW SEMINARY
סמינר החדש

Rebbetzin Sora F. Bulka
MENAHELES

Rabbi Yeshaya Levy
MENAHEL

FOR AN APPLICATION AND INFORMATION, PLEASE CALL: 718.769.8160

2600 OCEAN AVENUE, BROOKLYN, NY 11229 ■ 718.769.8160 ■ FAX: 718.769.8640